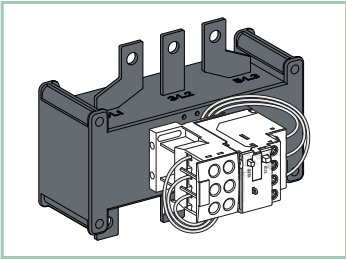


Thermal overload relay  
热过载继电器



HRB44442-04-D00

www.schneider-electric.com

LRE48•N  
热过载继电器



产品合格证

本产品经检验,符合标准IEC60947/GB/T14048  
和企业标准Q/JBSQ5,准予出厂。

上海施耐德工业控制有限公司  
Schneider Shanghai Industrial Control Co.,Ltd.  
上海市普陀区绥德路629号  
No. 629 Suide Road, Putuo District, Shanghai 200331

Schneider Electric Industries SAS  
35 Rue Joseph Monier  
92506 Reuil Malmaison  
France



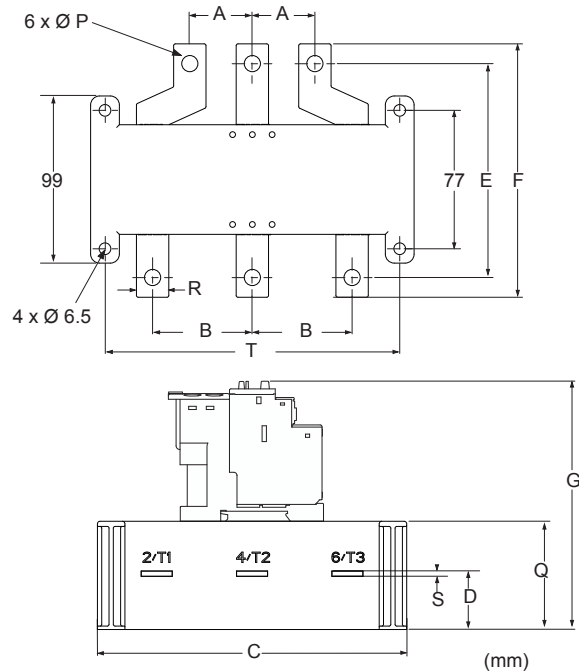
© 2018 Schneider Electric.  
All rights reserved.

▲▲ DANGER / 危险

**HAZARD OF ELECTRIC SHOCK,  
EXPLOSION, OR ARC FLASH**  
Disconnect all power before servicing  
equipment.  
**Failure to follow these instructions will  
result in death or serious injury.**

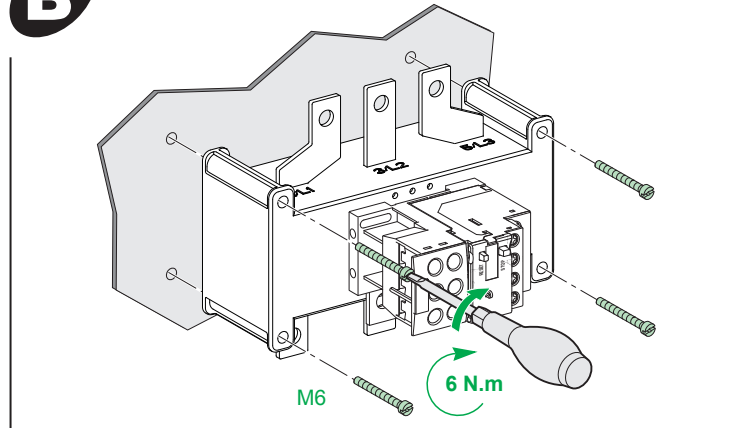
电击、爆炸或电弧闪光危险  
在此电力设备上工作时,请先切断所有  
电源。  
不遵循上述说明将导致人员伤亡。

**A**

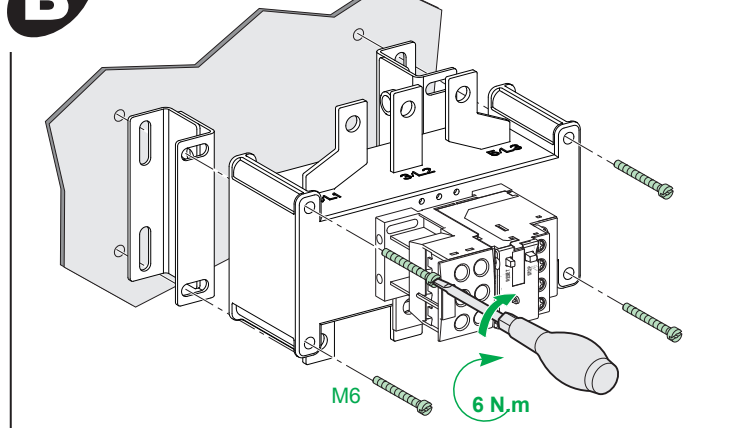


Range(A)	A	B	C	D	E	F	G	P	Q	R	S	T	
LRE480N	51...81	34.8	55.5	180	32	119	141	134	9	63	18	3	164
LRE481N	62...99	34.8	55.5	180	32	119	141	134	9	63	18	3	164
LRE482N	84...135	34.8	55.5	180	32	119	141	134	9	63	18	3	164
LRE483N	124...198	40	55.5	180	32	109	131	134	10	63	20	3	164
LRE484N	146...234	48	55.5	180	32	109	134	134	12	63	25	3	164
LRE485N	174...279	48	55.5	180	32.5	109	134	134	12	63	25	4	164
LRE486N	208...333	48	55.5	180	32.5	109	134	134	12	63	25	4	164
LRE487N	259...414	48	55.5	180	32.5	109	134	134	12	63	25	4	164
LRE488N	321...513	55	76	242	43	110	140	148	14	77	30	5	222
LRE489N	394...630	80	80	242	43.5	114	150	148	14	77	40	6	222

**B**

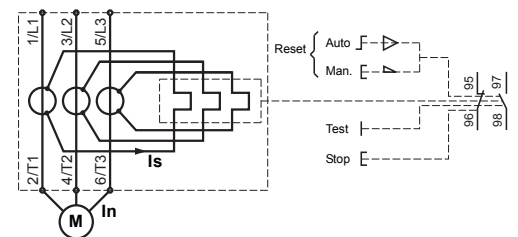
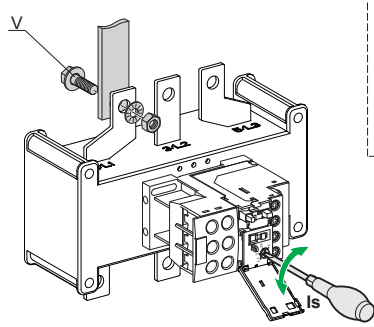


**B'**

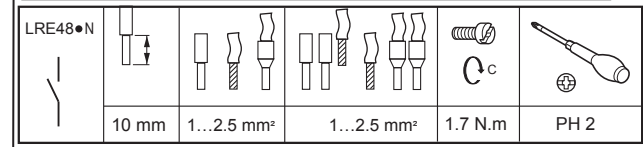


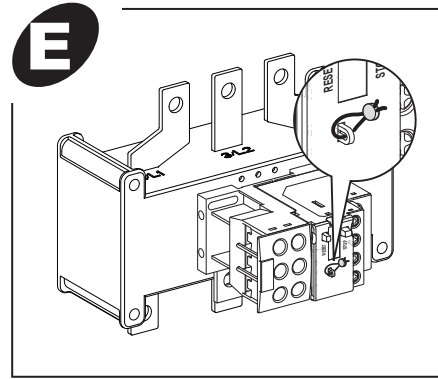
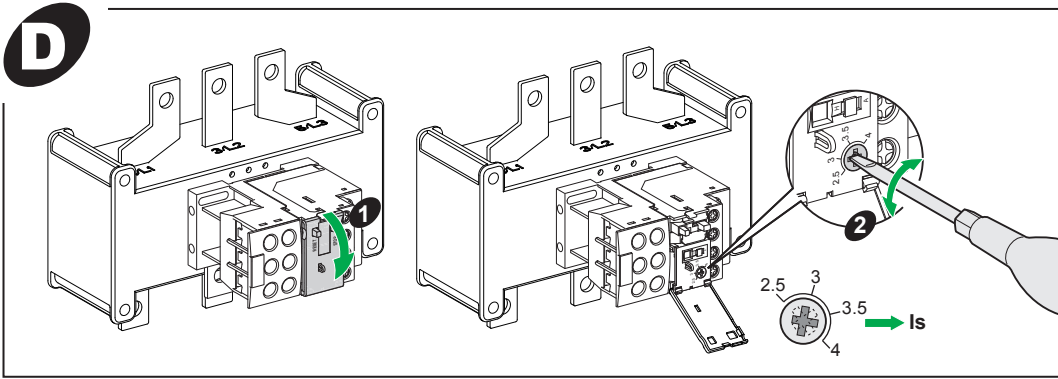
**C**

Range(A)	A	B	Ø	S(mm <sup>2</sup> )	V	C(N.m)
LRE480N	51...81	18	≤35	9	25	M8 27.5
LRE481N	62...99	18	≤35	9	35	M8 27.5
LRE482N	84...135	18	≤35	9	50	M8 27.5
LRE483N	124...198	20	≤30	10	95	M8 27.5
LRE484N	146...234	25	≤32	12	120	M10 35
LRE485N	174...279	25	≤32	12	185	M10 35
LRE486N	208...333	25	≤32	12	185	M10 35
LRE487N	259...414	25	≤32	12	150 x 2	M10 35
LRE488N	321...513	30	≤26	12	185 x 2	M10 35
LRE489N	394...630	40	≤28	14	240 x 2	M12 58



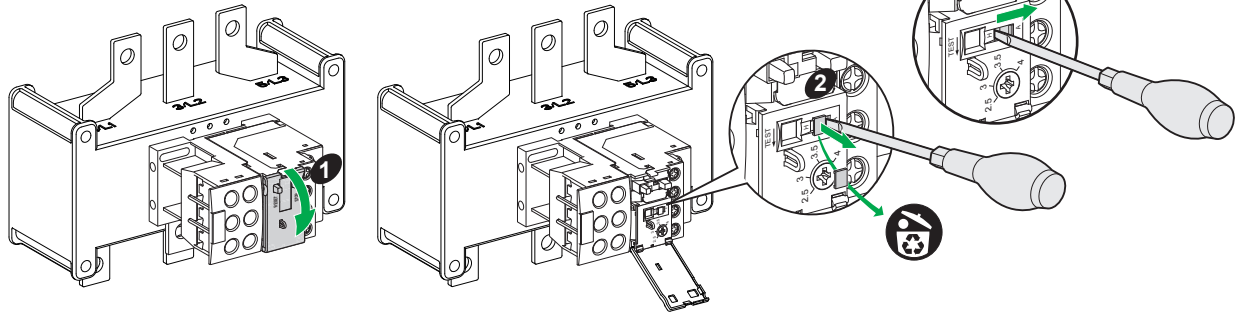
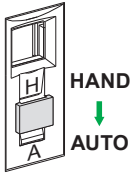
Is (A)	In (A)			
	2.5	3	3.5	4
LRE480N	51	61	71	81
LRE481N	62	74	87	99
LRE482N	84	101	118	135
LRE483N	124	149	174	198
LRE484N	146	175	204	234
LRE485N	174	209	244	279
LRE486N	208	250	291	333
LRE487N	259	310	362	414
LRE488N	321	385	449	513
LRE489N	394	472	551	630





### F

Man. (for manual)	手动 (表示手动)
Auto (for automatic)	自动 (表示自动)



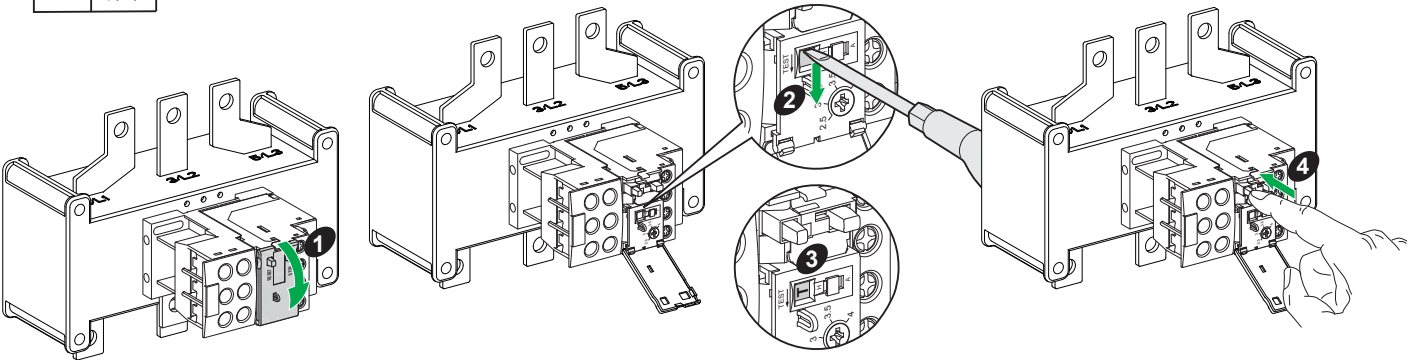
## WARNING / 警告

**AUTOMATIC START HAZARD**  
 Motor connected to the circuit may start automatically in auto restart position.  
**Failure to follow these instructions can result in death, serious injury, or equipment damage.**

**自动启动危险**  
 不遵循上述说明可能导致人员伤亡或设备损坏。  
 如果不遵守这些要求，可能会导致死亡、严重的人身伤害或损坏设备。

### G

Test	测试
------	----



### H

